



A project by

LIFESTYLE has an
ATTRACTIVE new
DEFINITION.



BUILD URBAN 

AMAARA

MAKE LIFE GRAND



3 BHK LUXURY APARTMENTS @
ALKAPURI COLONY, KARIMNAGAR, TELANGANA

BUILD URBAN



AMAARA

MAKE LIFE GRAND

LIFE has a **NEW** way
to Welcome you.

The way the world is living today, is changing unlike ever before. With evolution taking place every day, even the facets of living and lifestyle are turning innovative and exceptional, as emphasis these days is more on elegance and simplicity. Get delighted, Welcome to AMAARA.

5
Floors + Stilt

10
Flats



Large SPACES
meet abundant
LIGHT.



AMAARA is a smart personification of spaces and planning. A luxury residential community of 3 BHK apartments with just two apartments on each floor, it has homes spaced in area sizes of 2085 sft and 2144 sft. Each of the flats is resplendent in ventilation, with copious natural light and a whole lot of openness everywhere.

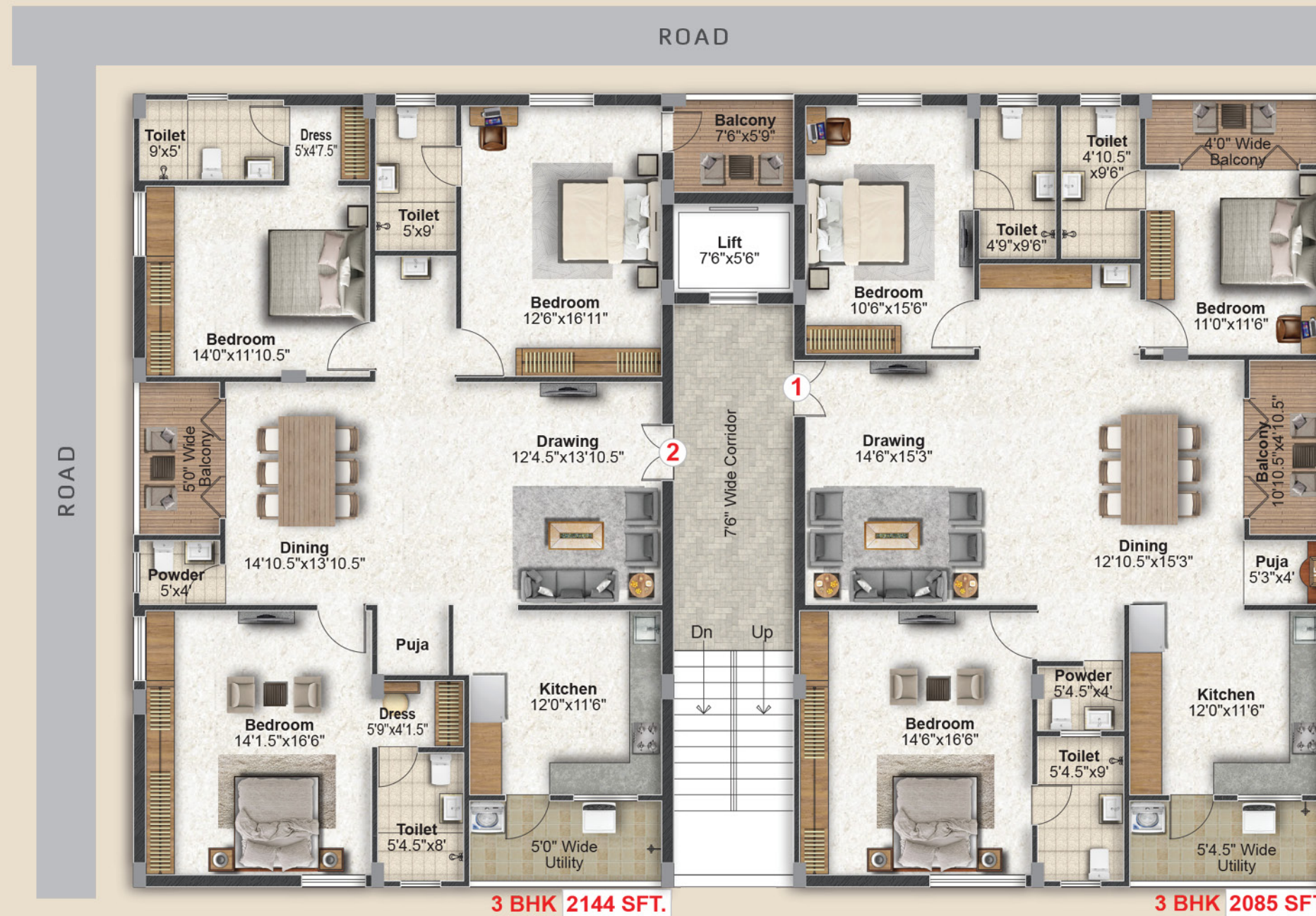
3D VIEWS



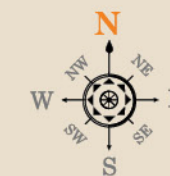
FLAT NO. 1
3 BHK (2085 SFT.)
WEST-FACING



FLAT NO. 2
3 BHK (2144 SFT.)
EAST-FACING



TYPICAL FLOOR PLAN



Area Statement

Flat No.	1	2
Type	3 BHK	3 BHK
Facing	West	East
Area (Sft.)	2085	2144



SPECIFICATIONS

STRUCTURE
R.C.C. framed structure with table moulded bricks in cement mortar.

WINDOWS
UPVC windows with mosquito mesh.

DOORS
Main Door: Teak wood frame aesthetically designed polished shutter with reputed make hardware.
Internal Doors: Teak wood frame with both sides veneer / limited flush doors.

PAINTING
Internal: Smooth luppam finish with acrylic emulsion paint.
External: Combination of textured / smooth finish.

FLOORING
Bedrooms, drawing, living, dining and kitchen with vitrified tiles of size (600mm x 600mm) for the entire flat.

WATER SUPPLY
Adequate water supply through bore-well water.

KITCHEN
Granite platform with stainless steel sink. Glazed ceramic tiles dado up to 2' height above kitchen platform.

GENERATOR
Generator Power Back Up for Light & Fan Points for entire Flat and Common Areas like Lifts, Staircase, Corridor & Parking Areas.

UTILITIES / WASH
Anti-skid tiles for wet area for washing utensils and glazed tiles up to 3' height.

ELECTRICAL
Concealed copper wiring of standard make with adequate light, fan, power plugs and points with standard make modular switches.

CABLE TV
Provision for cable TV connection in hall and master bedroom.

PARKING
Aesthetically-designed parking tiles.

TOILETS
Hot and cold wall mixer with shower provision for geyser's in all bathrooms. C.P fittings of ISI make. Tiles of reputed make up to door height.

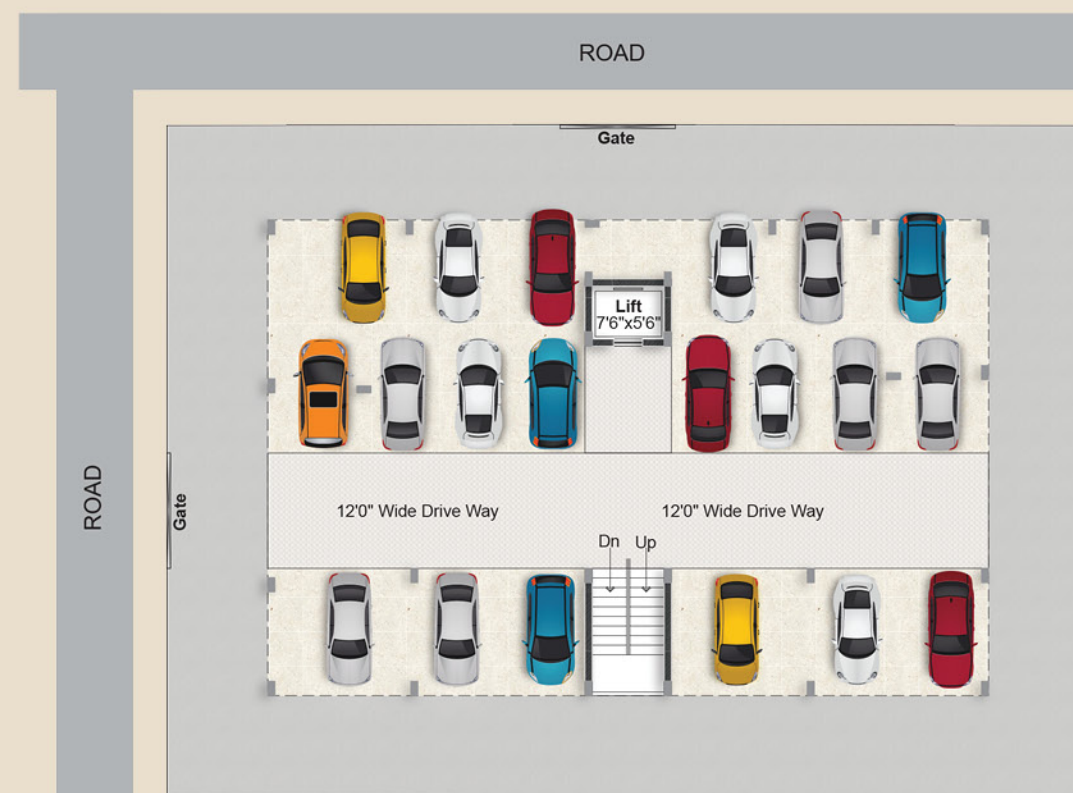
LIFT
6-passenger capacity fully automated.

NOTE
1) Registration Charges, GST and any other taxes applicable as per government norms to be borne by the customers only.
2) People desiring to alter / modify their flat, may do so with prior request and additional payment in advance.
3) Flat will be handed over for woodwork/ interiors after receiving 100% payment only. subject to payment of facilitating cost as may be decided by builder

FEATURES	100% VAASTU	POWER BACK-UP GENERATOR
QUALITY CONSTRUCTION	RAIN WATER HARVESTING PITS	NO COMMON WALLS
EXCELLENT VENTILATION	AMPLE CAR PARKING	APPROVED TERA TELANGANA REAL ESTATE REGULATORY AUTHORITY



PARKING PLAN



BUILD URBAN
AMAARA
MAKE LIFE GRAND



Making **LUXURY** a **STANDARD** availability.



LOCATION MAP

(NOT TO SCALE)

PROXIMITY

SCHOOLS

- Akshara
- International School : 6min
- Paramita World School : 7min
- Birla Open Minds
- International School : 7min

HOSPITALS

- Doctor Street : 5min
- Civil Hospital : 5min
- Chalmeda Ananda Rao
- Institute Of Medical Science: 11min

ENTERTAINMENT

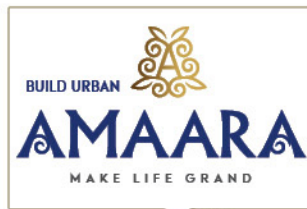
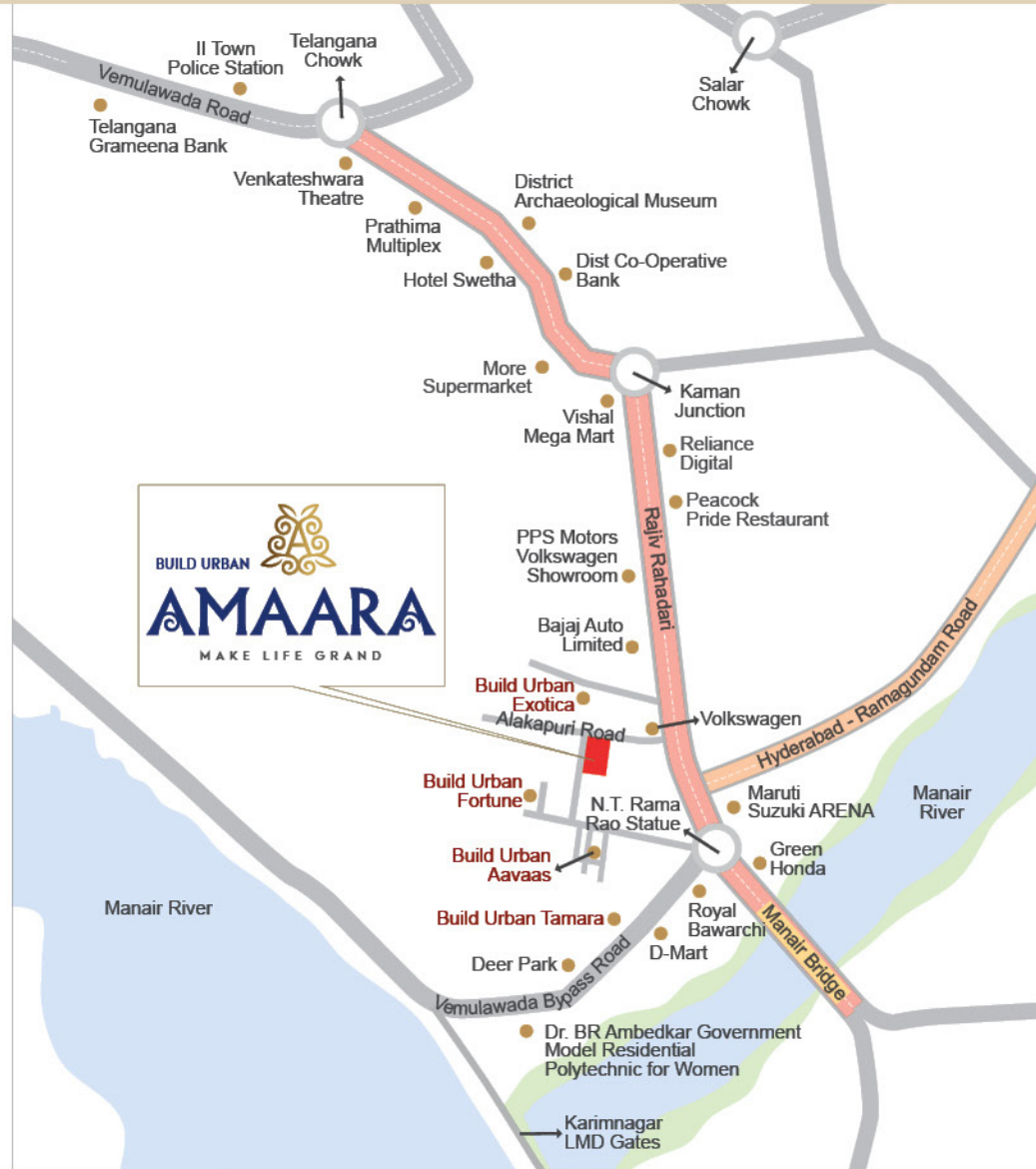
- Prathima Multiplex : 9min
- Mamatha Cinema : 9min
- R Cube Multiplex : 5min

SHOPPING MALL

- Dmart : 5min
- Reliance Digital : 5min
- Joyalukkas : 5min
- South India Shopping Mall : 8min
- Walmart : 12min



SCAN FOR LOCATION



COMPLETED PROJECTS



Tamara (Total 16 Flats) Karimnagar



Aavaas (Total 75 Flats) Kompally



Flora (Total 5 Flats) Kompally



Exotica (Total 8 Flats) Karimnagar



Fortune (Total 4 Flats) Karimnagar



Aavaas (Total 15 Flats) Karimnagar



Office Address:
Plot No. 31, Green County, Kompally, Hyderabad-500100
Branch & Site Address:
Plot No 72, Road No. 5, Alkapuri Colony,
Beside Volkswagen Showroom Lane, Karimnagar.

Cell : 91105 55506 / 90631 17118
Email : buildurbanconstructions@gmail.com
sales@buildurbanconstructions.com
Website : buildurbanconstructions.com



SCAN TO WEBSITE

